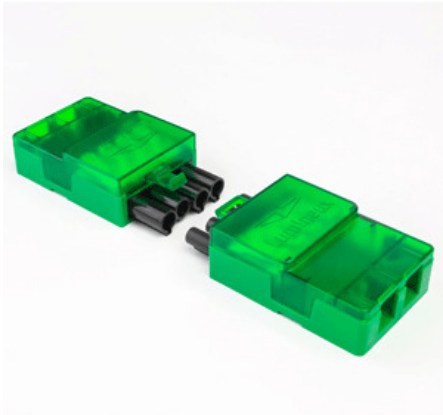


Connector

Loch Connectors 3 Pole 50pcs with Display Pack



Loch Connectors 3 Pole 50pcs with Display Pack



General Data

Mounting options	Connector
Electrical Connector Type	Push Fit Terminal
Input Cable	0.75-2.5mm ²
Input Electrical Connection	Live Neutral Earth
General Application	Commercial Industrial Residential Educational
Operating Temperature Range °C	-10 - +40
Warranty (Years)	1

Electrical Data

Mains voltage (V)	Up to 250V AC
Electrical protection	Class I Class II
Driver Output Current (mA)	20A Max

430524

Technical Specification

Physical Data

Housing colour	Green Pantone 355
Body material	Polycarbonate
IP Rating	20
IK Rating	4
Nominal Product Length (mm)	152.85
Nominal Product Width (mm)	45.51
Nominal Product Height (mm)	23.3
Weight (kg)	0.093

Standards and Approvals

Manufactured In Accordance To	EN 61535
CE Mark	Yes
UKCA Mark	Yes
WEEE Symbol	Yes
Certificate Of Conformity	Available on Request
Accredited Members	LIA, ISO9002